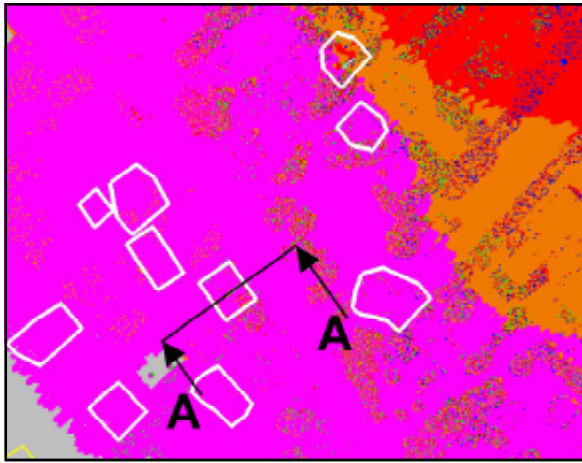
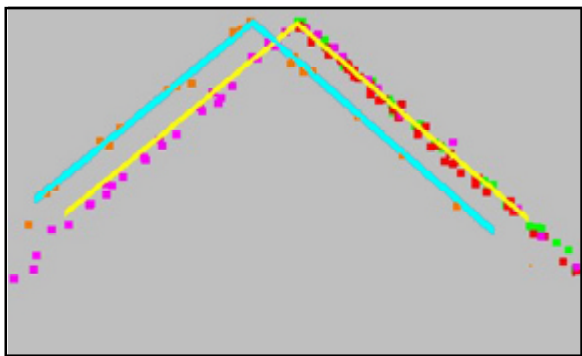


TerraMatch

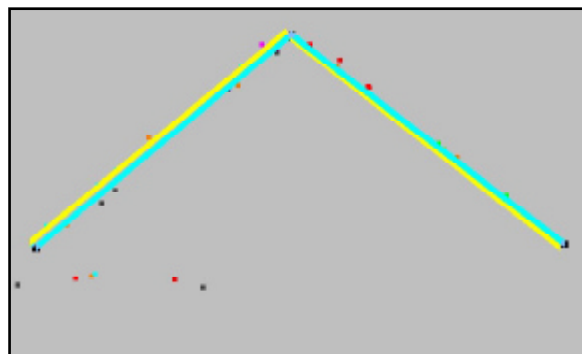
for MicroStation SE/J and V8



Laser points displayed according to the flight line numbers.



Laser points on a building roof show a mismatch between different flight lines



Laser points after matching process.

Automated Correction of LIDAR Data

TerraMatch is a sophisticated application for correcting laser data points optimized for MicroStation® SE/J and V8 from Bentley Systems. TerraMatch compares overlapping laser strips with each other and corrects orientation parameters to obtain the best fit and improved accuracy of the laser data. The adjustment is based on measured differences between the xyz shape or the intensity of laser points from different strips. The user can decide whether TerraMatch matches all the data points or only points from selected flight lines.

Key Features:

- A fully automatic procedure for correction of laser scanned surfaces
- Rigid modeling of errors in orientation
- Least-squares adjustment for estimation of orientation errors
- The observations are differences in elevation and/or intensity
- Area based matching adjusted to the geometry of laser scanning
- “Data-snooping” for detection of gross errors

Advantages:

- Automatic adjustment and control of laser data
- Integrated with an existing software package for processing laser data



Terrasolid

email: info@terrasolid.fi

<http://www.terrasolid.com>

MicroStation, PowerDraft and GeoOutlook are registered trademarks of Bentley Systems. Windows 98 and Windows NT are trademarks of Microsoft Corporation. All other brands and product names are trademarks of their respective owners. Terrasolid Ltd. believes the information in this publication is accurate as of its publication date. The information is subject to change without notice.